



Installation Instructions



Cubicle Fittings



1B1 Indicator Lock



Outward Indicator Latch



L6 Support Leg



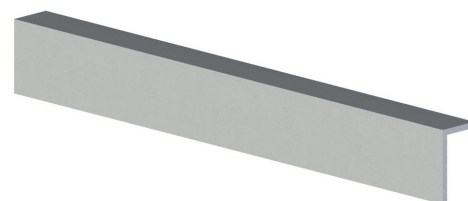
U brackets



Partition wall U brackets



HO3 Hinge Channel



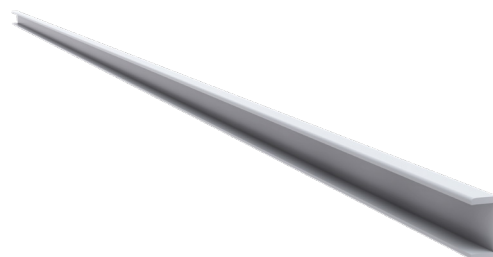
HR1 Headrail



Coat Hook



H Channel

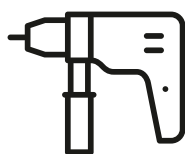


U Channel

Tools Required



Cordless Drill



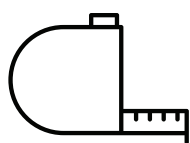
Hammer Drill



Circular Saw



Spirit Level



Tape Measure



Screwdriver



Pencil



Allen Key Set

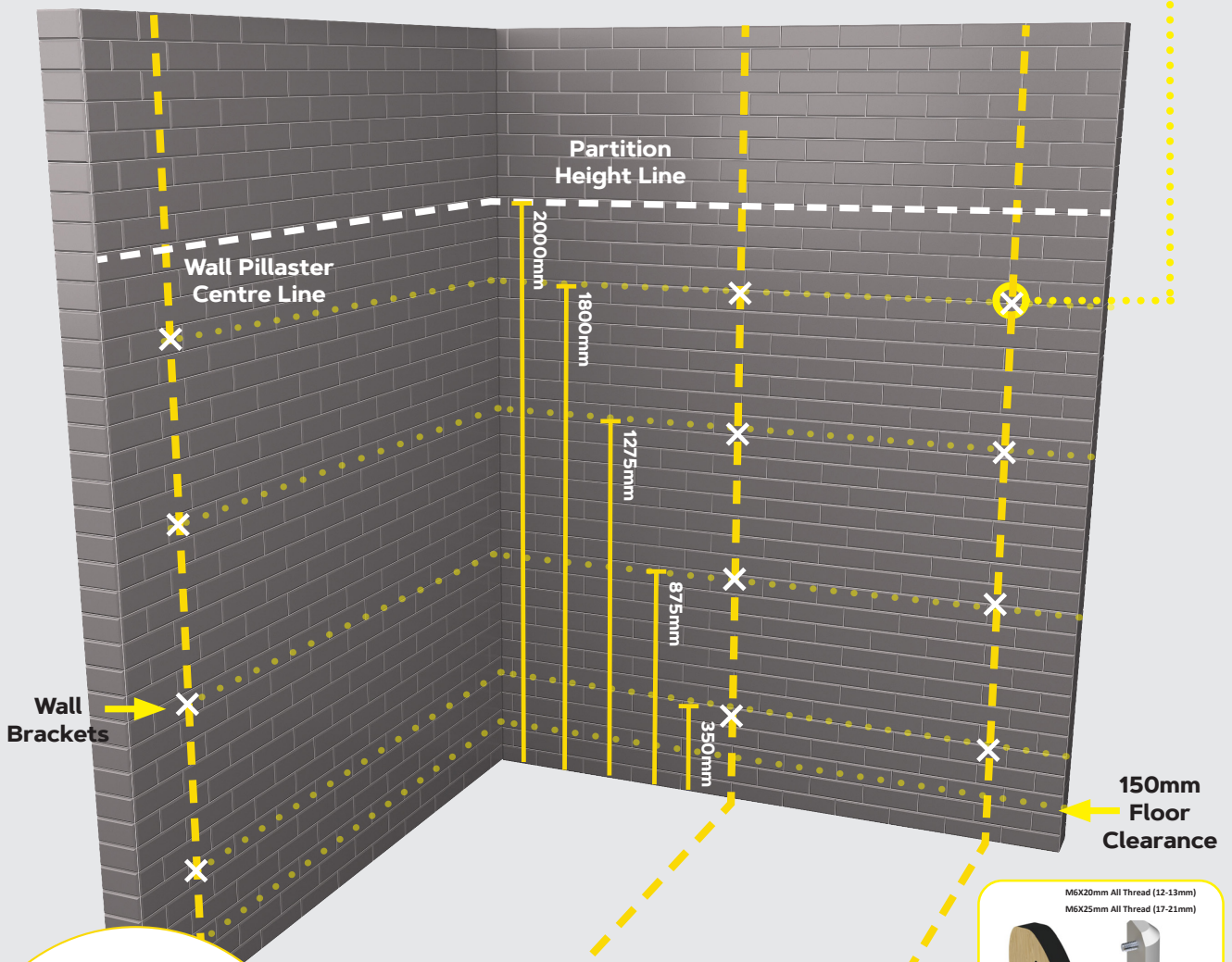
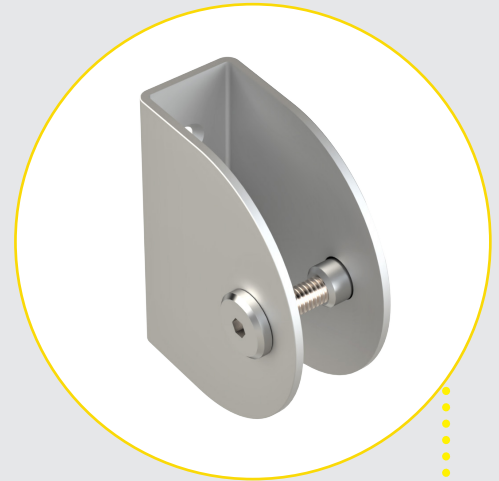


Hammer

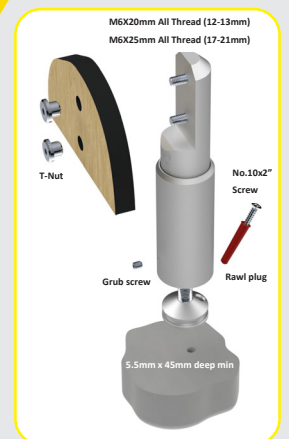
Step 1

1. Measure and mark a vertical line on the rear wall for the partition positions.

2. Then mark the wall equally to fix 4 x wall U brackets per partition and end wall pilasters. Please see dimensions below for U bracket center point position.

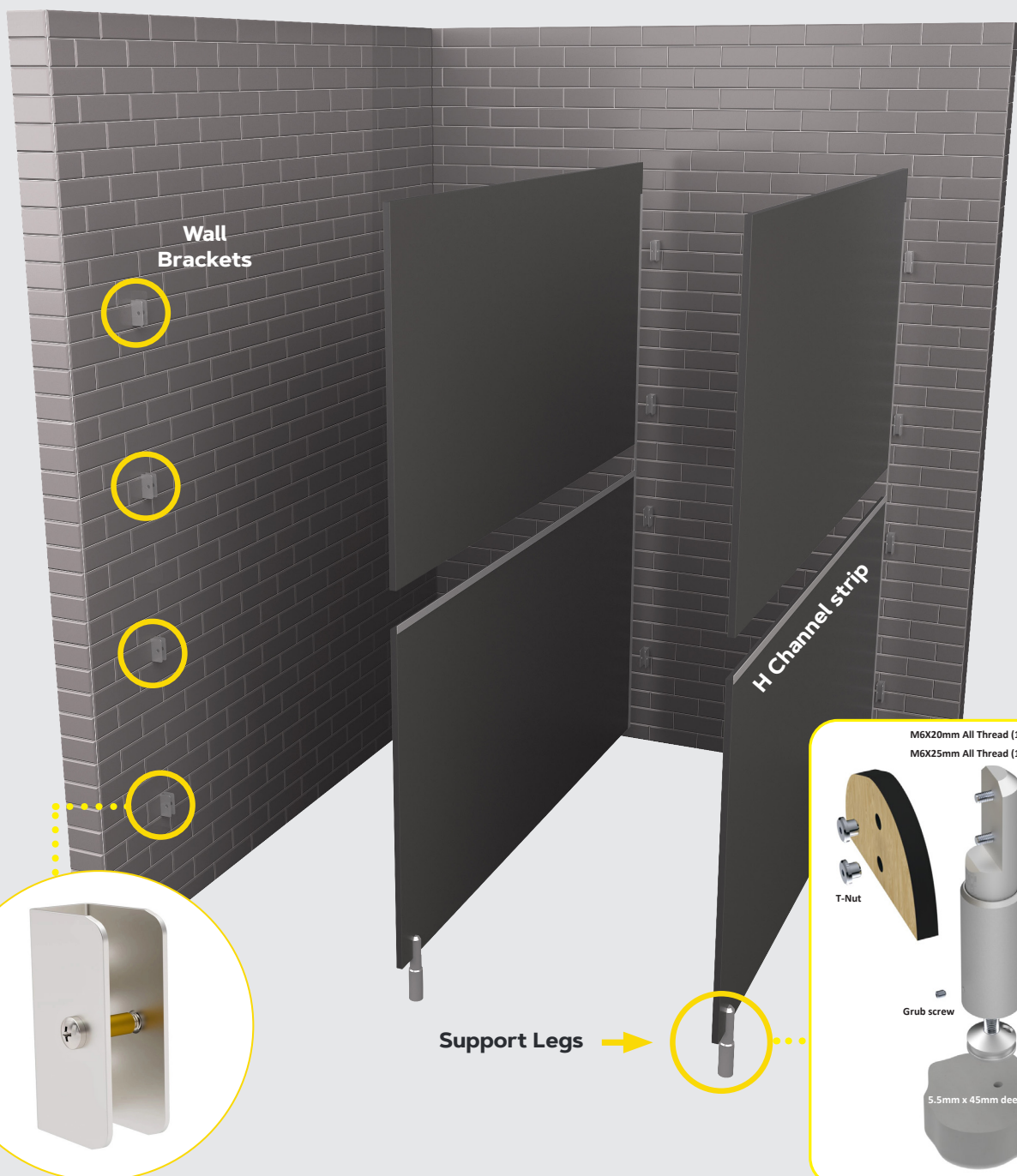


Floor Fastener Location



Step 2

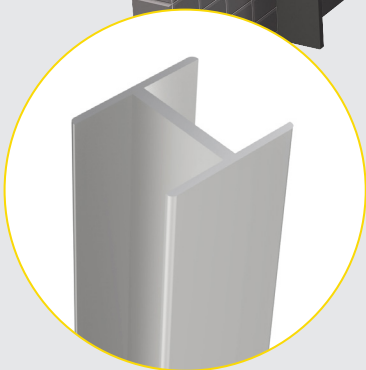
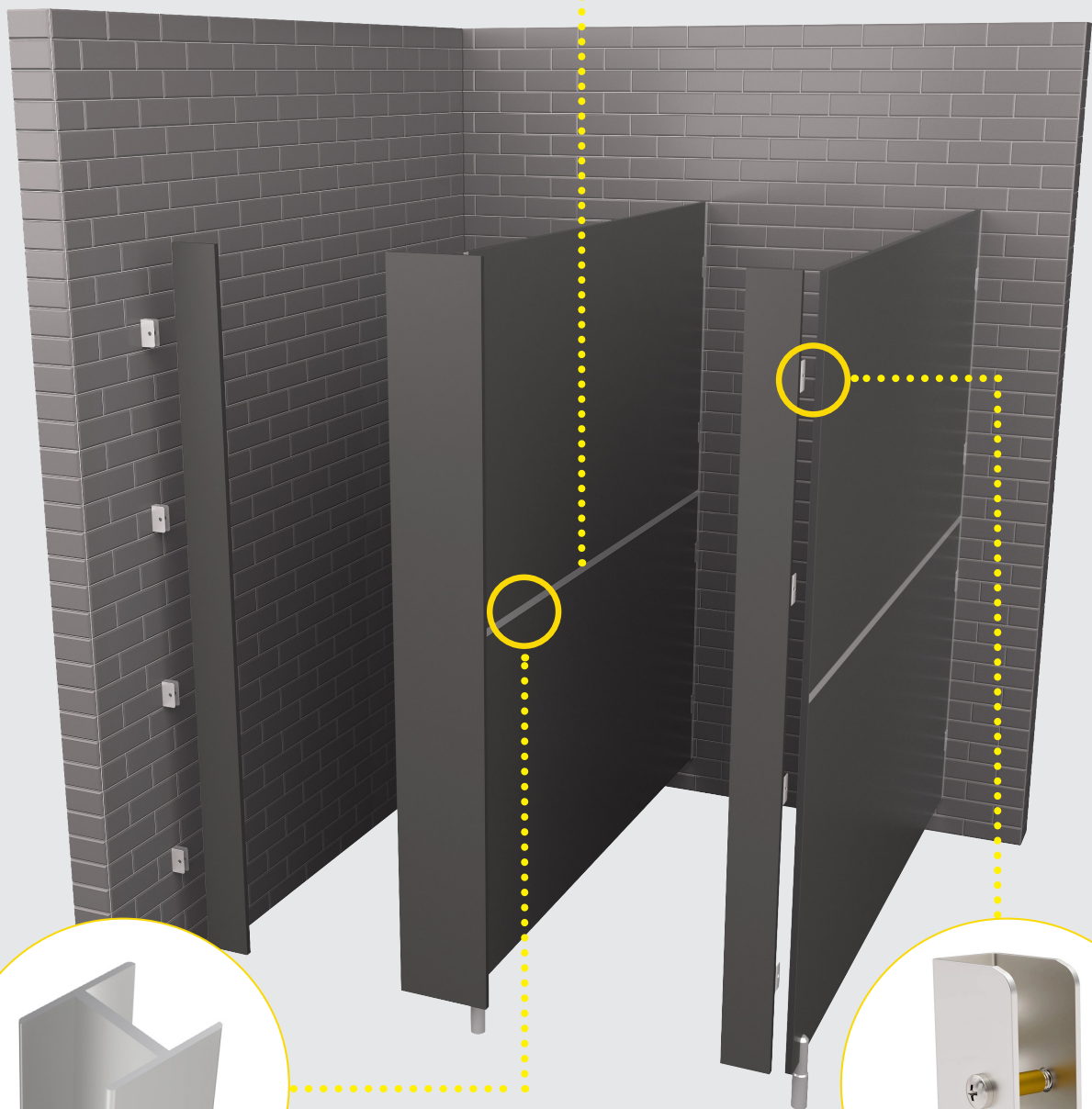
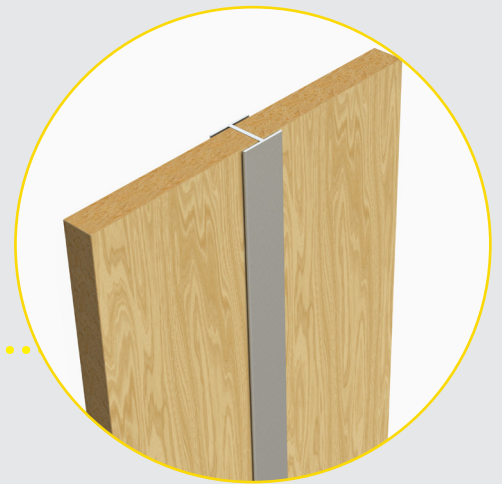
1. Fix 4 x U brackets for each partition on the vertical line marked.
2. Cut the partition panels to size if required in depth. Plastic U trim provided will cover the sawn ends.
3. Drill and fix the support leg onto bottom of the partition panel. Leg position is at the front where the partition attaches to the front pilasters.
4. Place the bottom partition panel into the 2 x wall brackets on the back structural wall, securing the panel with fixings provided.
5. Wind the support leg until bottom panel is level, then drill and secure leg to the floor.
6. Insert the H channel joining strip onto the bottom partition panel.
7. Slide the top half panel onto the bottom panel, then drill and secure into wall brackets, connecting the 2 x panels together.



Step 3

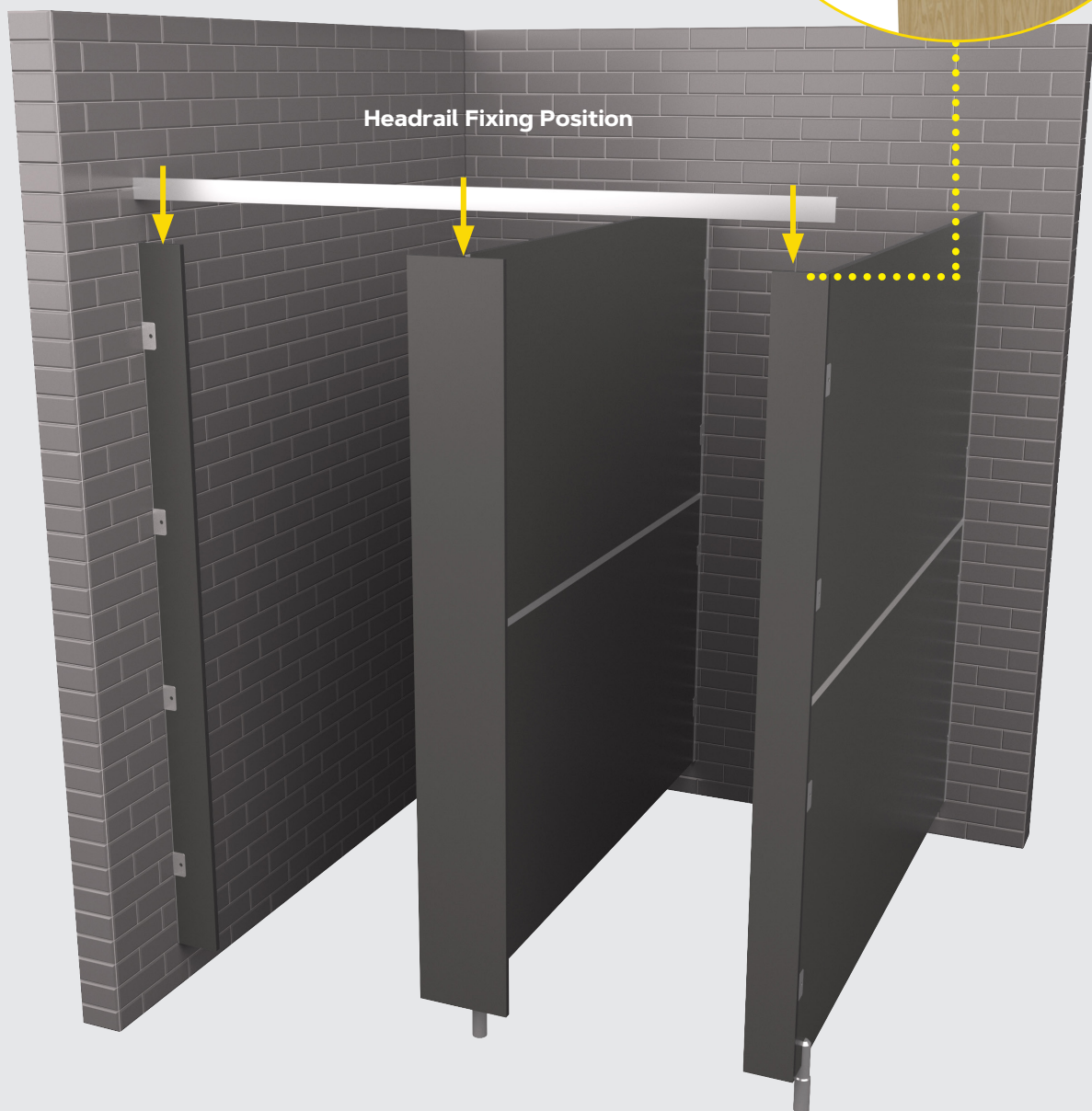
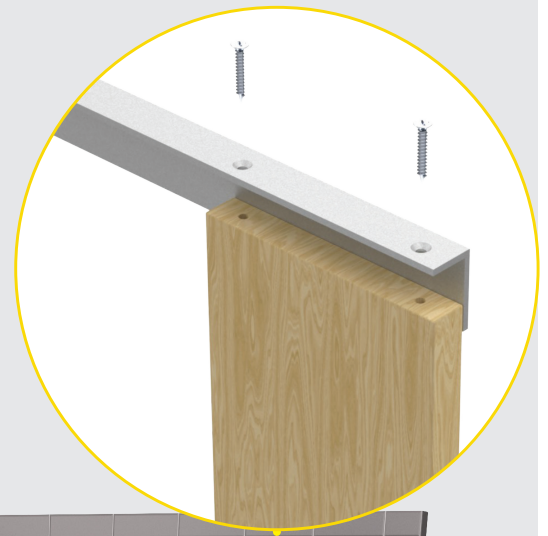
1. Fix and secure wall pilaster into wall brackets using the fitting provided.

2. Fix U Brackets to middle pilasters, then secure the pilaster to the partition with fixings provided.



Step 4

1. Mark and drill 2x pilot holes in top section of headrail to fix to each pilaster.
2. Drill and fix headrail down into the top of the front pilasters.

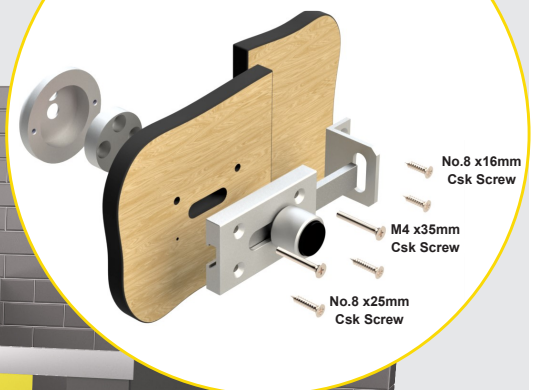


Step 5

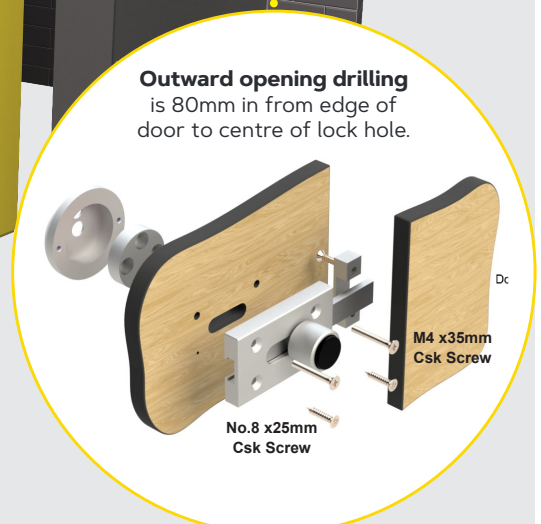
1. Cubicle doors are adjustable in width. Cut the doors to the correct size you require
2. Calculating door size make sure you have 22mm overlapping pilasters either end.
(i.e. 650mm door - walk through clearance 606mm)
3. Secure and fix the cubicle doors to the front pilasters by using the hinge channel kit. The sawn cut end is fitted into the channel.
4. Install the indicator locks once doors have been fitted.
5. For outward opening doors please use the outward opening lock latch, which is fitted to the outside of the pilasters.

Inward opening

Inward opening drilling is 67mm in from edge of door to centre of lock hole.



Outward opening drilling is 80mm in from edge of door to centre of lock hole.



Outward opening

